

# MHT-X7140


TECHNICAL DATA SHEET



 **MANITOU**

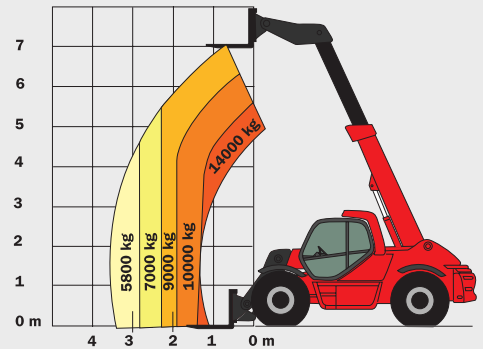
[www.manitou.com](http://www.manitou.com)

# MHT-X7140

MHT-X 7140	
<b>Lifting</b>	
Max. capacity at 600 mm LC	14000 kg
Max. capacity at 1200 mm LC	9000 kg
Max. lifting height	7 m
<b>Unladen time</b>	
Lifting	11.5 s
Lowering	7.8 s
Extension	7.7 s
Retraction	5.1 s
<b>Tyres</b>	16.00 R 25
<b>Braking</b>	
Service brake	multiple-disk brake with oil bath on front and rear axles
Parking brake	automatic negative handbrake
<b>Engine</b>	
MERCEDES - STAGE 3A	
Type	OM 904
Cubic capacity	4250 cm <sup>3</sup>
Power	175 HP / 129 kW
Max. torque	675 Nm - 1200 rpm
Injection	direct
Cooling	water
Laden drawbar pull	15500 daN
Gradeability (unladen/laden)	100% / 45%
<b>Transmission</b>	
hydrostatic with automatic power regulation 4 wheel drive	
Reversing shift	electro magnetic
Number of gears (forward/reverse)	2/2
Max. travel speed (may vary according to applicable regulations)	25 kph
Axle	OMCI
Steering mode	4 wheel steer 3 steering modes 
<b>Controls</b>	
JSM® Joystick multi-fonction load limiter cut off system - EN15000 norm	
<b>Hydraulics</b>	
Load Sensing Pump	170 l/min - 350 bar
<b>Capacities</b>	
Hydraulic oil	290 l
Fuel	200 l
<b>Unladen weight (with forks)</b>	
20570 kg	
<b>Dimensions</b>	
1. Front wheel centre to carriage	1.33 m
2. Ground clearance	0.44 m
3. Overall length to carriage	5.98 m
4. Wheelbase	3.40 m
5. Rear wheel centre to rear face	1.25 m
6. Overall width of cab	0.90 m
7. Inside tyre width	2.00 m
8. Overall width	2.48 m
9. Overall height	2.93 m
Standard forks (length x width x thickness)	1500 x 200 x 80 mm
Turning radius (over tyres)	5.59 m
Carriage rotation (crowd/dump)	12°/12°
<b>Noise and vibration</b>	
Noise at driving position (LpA)	79.2 dB
Environmental noise (LwA)	108 dB
Vibration to whole hand/arm	<2.5 m/s <sup>2</sup>
Vibration on driver's body	<0.5 m/s <sup>2</sup>

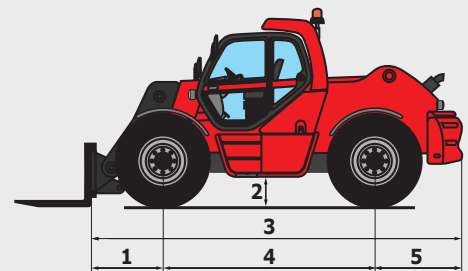
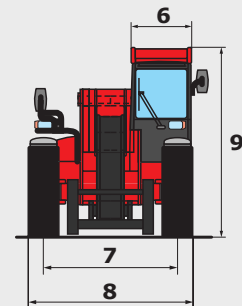
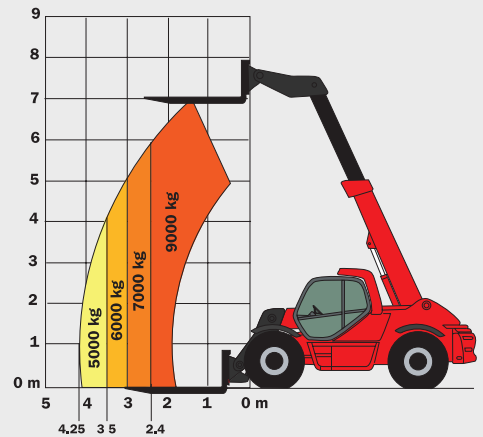
## Rough terrain load chart CDG 600

Standard EN1459 B



## Rough terrain load chart CDG 1200

Standard EN1459 B



This brochure describes versions and configuration options for MANITOU products which may be fitted with different equipment. The equipment described in this brochure may be standard, optional or not available depending on version. MANITOU reserves the right to change the specifications shown and described at any time and without prior warning. The manufacturer is not liable for the specifications given. For more information, contact your MANITOU dealer. Non-contractual document. Product descriptions may differ from actual products. List of specifications is not comprehensive. The logos and visual identity of the company are the property of MANITOU and may not be used without authorisation. All rights reserved. The photos and diagrams contained in this brochure are provided for information only.

MANITOU BF SA - Limited company with board of directors - Share capital: 39,547,824 euros - 857 802 508 RCS Nantes

